



NATA LIGHTING CO.,LTD.
www.nata.cn
Email:info@nata.com
Tel:+86-750-3770000 Fax:+86 750 3771111
Address:Address:380JinOu Road,GaoXin Zone,Jiang Men City,Guangdong,China

Nata

Client:

LumCAT: 2-2759-L

Luminaire: 92.70.412.00

Report No: 2024812-B006

Ballast type: AC

Test No: 2024812-C006

Voltage(V): 36.800

LampCAT: P2141-036-1206-P3090-1

Current(A): 0.695

Lamp flux(lm): 3141.0

Power (W): 25.570

Number of Lamps: 1

PF: 0.000

Length(mm): 0

Width(mm): 0

Phm Type: C

Height(mm): 0

Photometric Results

Lumens(lm): 2912.09, Efficiency(%): 92.71% , Luminous Efficacy(lm/W): 113.89

Central intensity(cd): 5973.058, Maximum intensity(cd): 5973.058

Angle of maximum intensity: C=0.0 γ =0.0

Beam Angle(50%Imax): [C0/180]Total=38.8

[C90/270]Total=38.8

Field angle(10%Imax): [C0/180]Total=69.0

[C90/270]Total=69.0

Maximum s/h(1/2): C0_180=0.62 C90_270=0.62

Maximum s/h(1/4): C0_180=0.65 C90_270=0.65

Up flux rate of lamp(%): 0.00%

Down flux rate of lamp(%): 92.71%

Up flux rate of LUM(%): - -

Down flux rate of LUM(%): 100.00%

CIE Type : Direct lighting

Output flux ratio in π solid angle : 99.286%

Equipment: GMS 1800
Temperature(°C): 25.0

Date: 2024/8/12
Humidity(%): 60.0%

Operator: NT
Distance(m): 7.25

$\gamma(^{\circ})$	Average I(cd)	Zonal F(lm)	Sum F(lm)	Eff Flux(%)	Eff Sum(%)
0.0	5973.058	0.000	0	0.00%	0.00%
1.0	5962.355	5.711	5.711	0.18%	0.20%
2.0	5932.887	17.073	22.784	0.54%	0.78%
3.0	5882.197	28.258	51.042	0.90%	1.75%
4.0	5810.035	39.138	90.179	1.25%	3.10%
5.0	5720.962	49.606	139.785	1.58%	4.80%
6.0	5601.382	59.502	199.287	1.89%	6.84%
7.0	5461.461	68.667	267.954	2.19%	9.20%
8.0	5302.807	77.038	344.992	2.45%	11.85%
9.0	5125.422	84.515	429.507	2.69%	14.75%
10.0	4932.077	91.017	520.524	2.90%	17.87%
11.0	4728.858	96.533	617.056	3.07%	21.19%
12.0	4535.736	101.275	718.332	3.22%	24.67%
13.0	4329.093	105.203	823.535	3.35%	28.28%
14.0	4128.311	108.254	931.789	3.45%	32.00%
15.0	3921.261	110.508	1042.297	3.52%	35.79%
16.0	3686.267	111.472	1153.768	3.55%	39.62%
17.0	3487.502	111.715	1265.483	3.56%	43.46%
18.0	3283.376	111.637	1377.12	3.55%	47.29%
19.0	3072.548	110.580	1487.7	3.52%	51.09%
20.0	2860.077	108.583	1596.284	3.46%	54.82%
21.0	2648.624	105.778	1702.062	3.37%	58.45%
22.0	2448.052	102.420	1804.482	3.26%	61.97%
23.0	2260.772	98.804	1903.286	3.15%	65.36%
24.0	2090.897	95.143	1998.429	3.03%	68.63%
25.0	1935.529	91.552	2089.981	2.91%	71.77%
26.0	1806.054	88.320	2178.302	2.81%	74.80%
27.0	1654.576	84.665	2262.967	2.70%	77.71%
28.0	1469.891	79.105	2342.072	2.52%	80.43%
29.0	1344.411	73.630	2415.702	2.34%	82.95%
30.0	1164.686	67.745	2483.447	2.16%	85.28%
31.0	1057.176	61.831	2545.278	1.97%	87.40%
32.0	931.381	56.970	2602.248	1.81%	89.36%
33.0	780.809	50.442	2652.69	1.61%	91.09%
34.0	655.967	43.481	2696.171	1.38%	92.59%
35.0	529.147	36.805	2732.976	1.17%	93.85%
36.0	416.512	30.110	2763.086	0.96%	94.88%
37.0	316.150	23.895	2786.981	0.76%	95.70%

$\gamma(^{\circ})$	Average I(cd)	Zonal F(lm)	Sum F(lm)	Eff Flux(%)	Eff Sum(%)
38.0	250.690	18.920	2805.902	0.60%	96.35%
39.0	174.816	14.524	2820.425	0.46%	96.85%
40.0	130.256	10.640	2831.065	0.34%	97.22%
41.0	88.193	7.779	2838.844	0.25%	97.48%
42.0	72.655	5.844	2844.688	0.19%	97.69%
43.0	63.417	5.040	2849.728	0.16%	97.86%
44.0	56.097	4.511	2854.239	0.14%	98.01%
45.0	49.632	4.063	2858.302	0.13%	98.15%
46.0	44.586	3.685	2861.987	0.12%	98.28%
47.0	39.435	3.342	2865.329	0.11%	98.39%
48.0	35.243	3.019	2868.348	0.10%	98.50%
49.0	31.807	2.753	2871.101	0.09%	98.59%
50.0	29.041	2.537	2873.638	0.08%	98.68%
51.0	26.196	2.337	2875.975	0.07%	98.76%
52.0	23.896	2.149	2878.125	0.07%	98.83%
53.0	22.089	2.000	2880.125	0.06%	98.90%
54.0	20.375	1.872	2881.997	0.06%	98.97%
55.0	18.949	1.755	2883.752	0.06%	99.03%
56.0	17.773	1.659	2885.411	0.05%	99.08%
57.0	16.702	1.576	2886.988	0.05%	99.14%
58.0	15.756	1.501	2888.488	0.05%	99.19%
59.0	14.888	1.433	2889.921	0.05%	99.24%
60.0	14.205	1.374	2891.296	0.04%	99.29%
61.0	13.679	1.331	2892.626	0.04%	99.33%
62.0	13.127	1.292	2893.918	0.04%	99.38%
63.0	12.576	1.250	2895.168	0.04%	99.42%
64.0	12.017	1.207	2896.375	0.04%	99.46%
65.0	11.485	1.163	2897.538	0.04%	99.50%
66.0	10.894	1.117	2898.654	0.04%	99.54%
67.0	10.388	1.070	2899.725	0.03%	99.58%
68.0	9.777	1.021	2900.746	0.03%	99.61%
69.0	9.113	0.964	2901.71	0.03%	99.64%
70.0	8.633	0.911	2902.621	0.03%	99.67%
71.0	8.147	0.867	2903.488	0.03%	99.70%
72.0	7.615	0.820	2904.308	0.03%	99.73%
73.0	7.142	0.772	2905.08	0.02%	99.76%
74.0	6.715	0.728	2905.808	0.02%	99.78%
75.0	6.268	0.686	2906.494	0.02%	99.81%

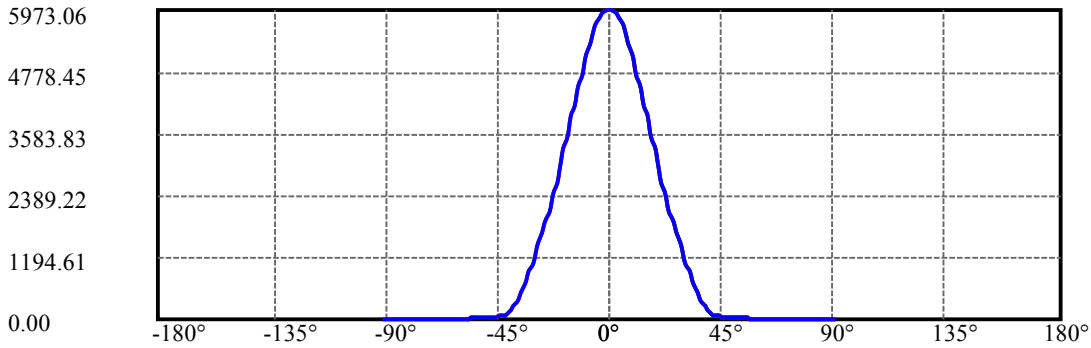
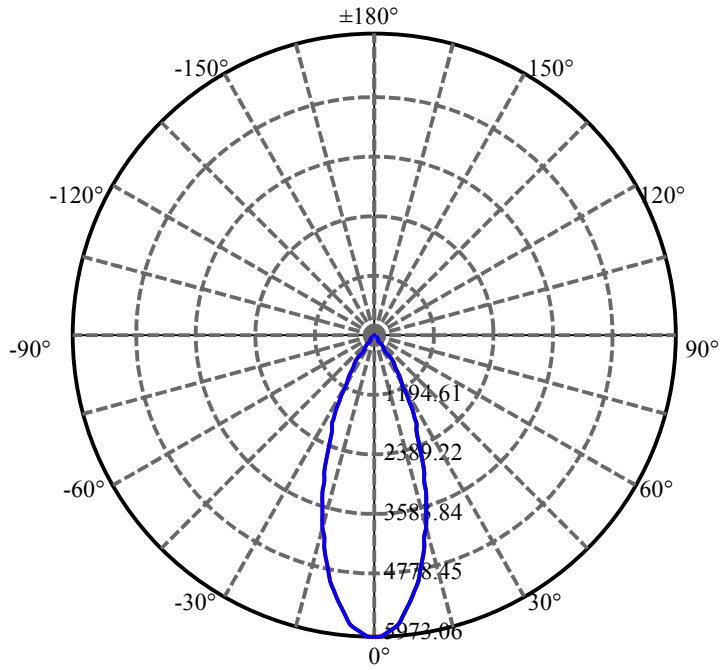
$\gamma(^{\circ})$	Average I(cd)	Zonal F(lm)	Sum F(lm)	Eff Flux(%)	Eff Sum(%)
76.0	5.775	0.639	2907.133	0.02%	99.83%
77.0	5.368	0.594	2907.727	0.02%	99.85%
78.0	4.928	0.551	2908.279	0.02%	99.87%
79.0	4.507	0.507	2908.786	0.02%	99.89%
80.0	4.146	0.467	2909.252	0.01%	99.90%
81.0	3.732	0.426	2909.678	0.01%	99.92%
82.0	3.430	0.388	2910.066	0.01%	99.93%
83.0	3.068	0.353	2910.42	0.01%	99.94%
84.0	2.760	0.317	2910.737	0.01%	99.95%
85.0	2.516	0.288	2911.025	0.01%	99.96%
86.0	2.260	0.261	2911.286	0.01%	99.97%
87.0	2.037	0.235	2911.521	0.01%	99.98%
88.0	1.787	0.209	2911.731	0.01%	99.99%
89.0	1.623	0.187	2911.918	0.01%	99.99%
90.0	1.570	0.175	2912.093	0.01%	100.00%

ZONAL LUMEN SUMMARY

Zone	Lumens	%Lamp	%Fixt
0-30	2483.45	79.07%	85.28%
0-40	2831.07	90.13%	97.22%
0-60	2891.30	92.05%	99.29%
0-90	2911.92	92.71%	99.99%
0-120	2911.92	92.71%	99.99%
0-180	2912.09	92.71%	100.00%
60-90	20.62	0.66%	0.71%
90-120	0.00	0.00%	0.00%
90-130	0.00	0.00%	0.00%
90-150	0.00	0.00%	0.00%
90-180	0.00	0.00%	0.00%
0-27.84	2329.67	74.17%	80.00%

ZONAL LUMEN SUMMARY

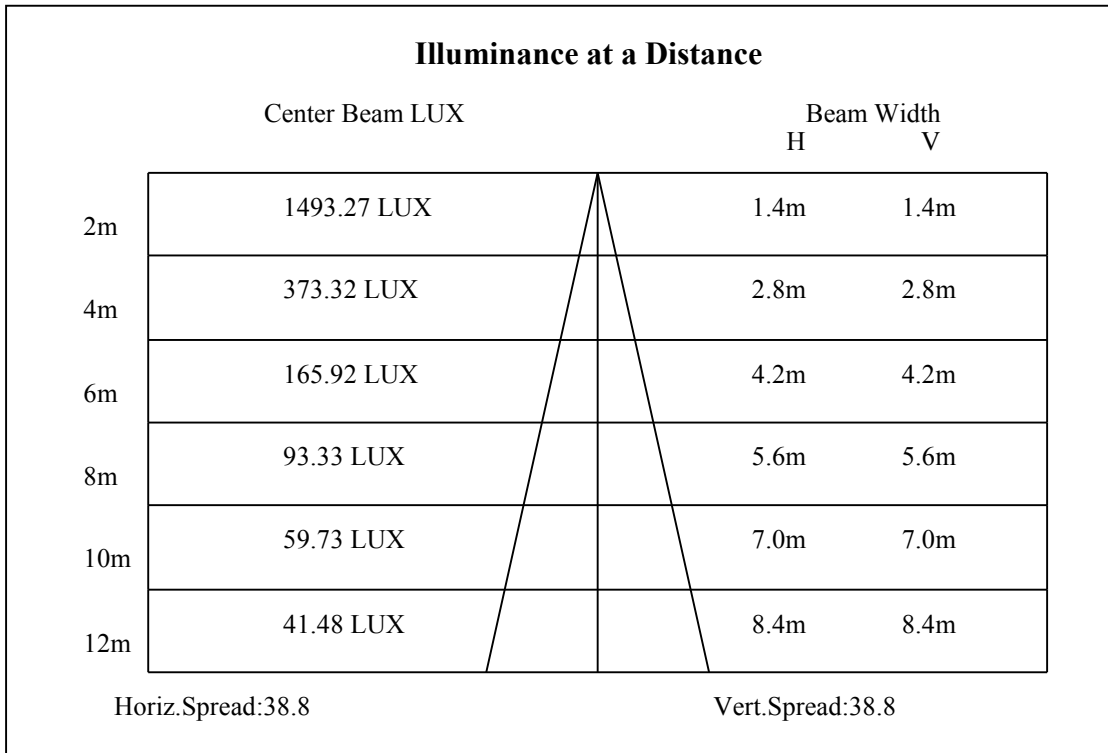
0-10	520.52
10-20	1075.76
20-30	887.16
30-40	347.62
40-50	42.57
50-60	17.66
60-70	11.33
70-80	6.63
80-90	2.67
90-100	0.00
100-110	0.00
110-120	0.00
120-130	0.00
130-140	0.00
140-150	0.00
150-160	0.00
160-170	0.00
170-180	0.00

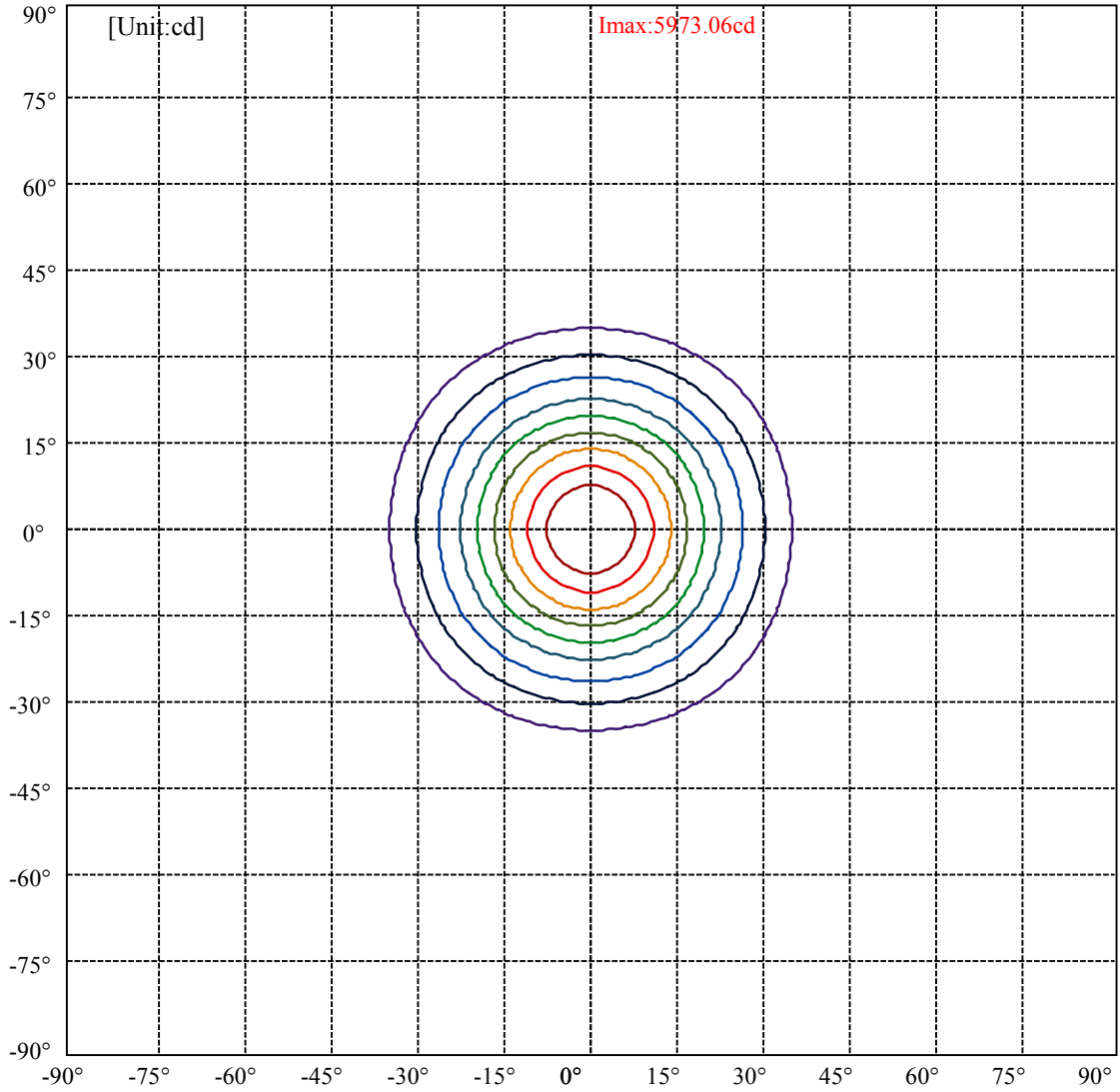


C0(Max): ———
C0/C180: ———
C90/C270: ———

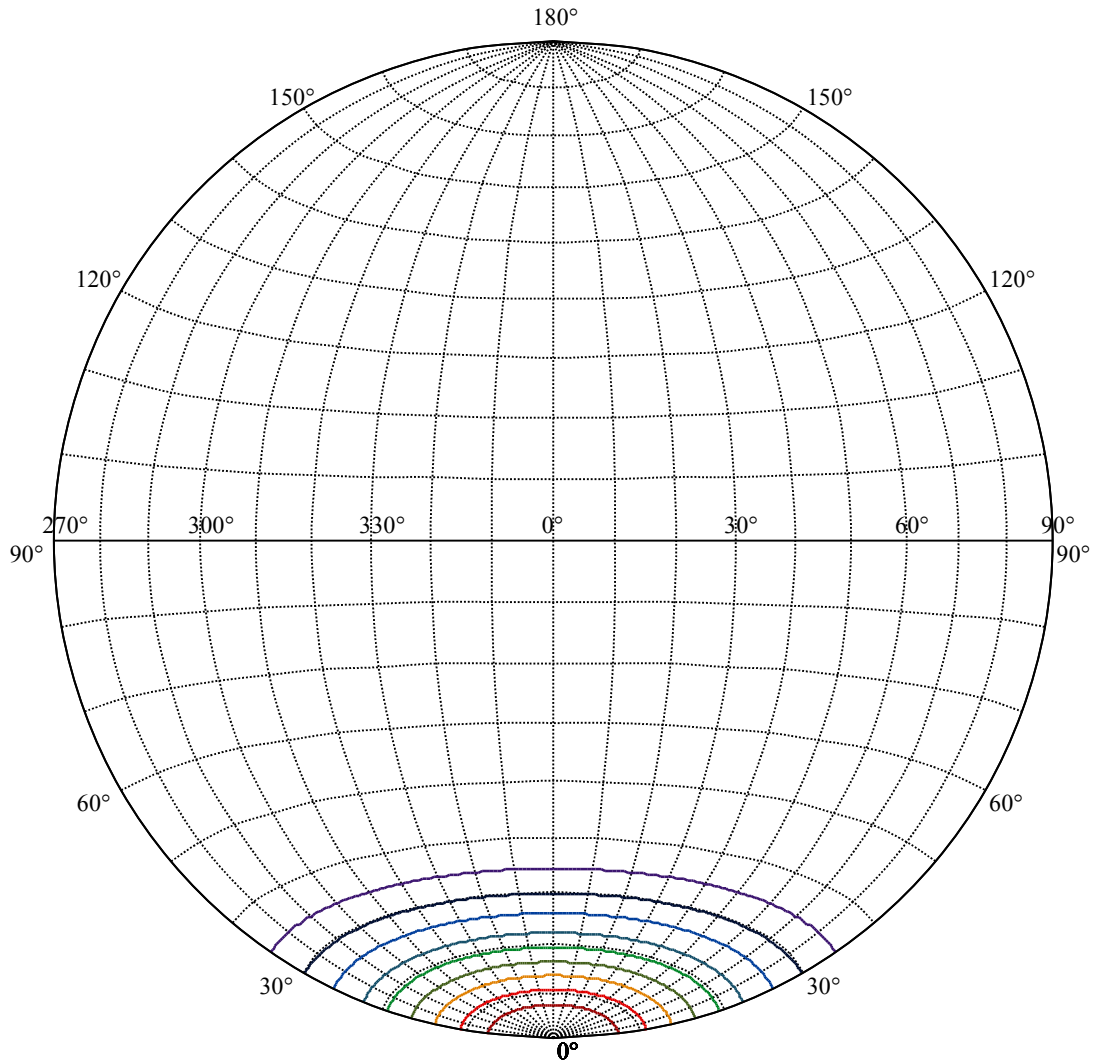
Field angle(10%Imax):C0/180Left:34.5 Right:34.5
:C90/270Left:34.5 Right:34.5

Beam Angle(50%Imax):C0/180Left:19.4 Right:19.4
:C90/270Left:19.4 Right:19.4





(10%Imax) 597.306	—
(20%Imax) 1194.61	—
(30%Imax) 1791.92	—
(40%Imax) 2389.22	—
(50%Imax) 2986.53	—
(60%Imax) 3583.83	—
(70%Imax) 4181.14	—
(80%Imax) 4778.45	—
(90%Imax) 5375.75	—



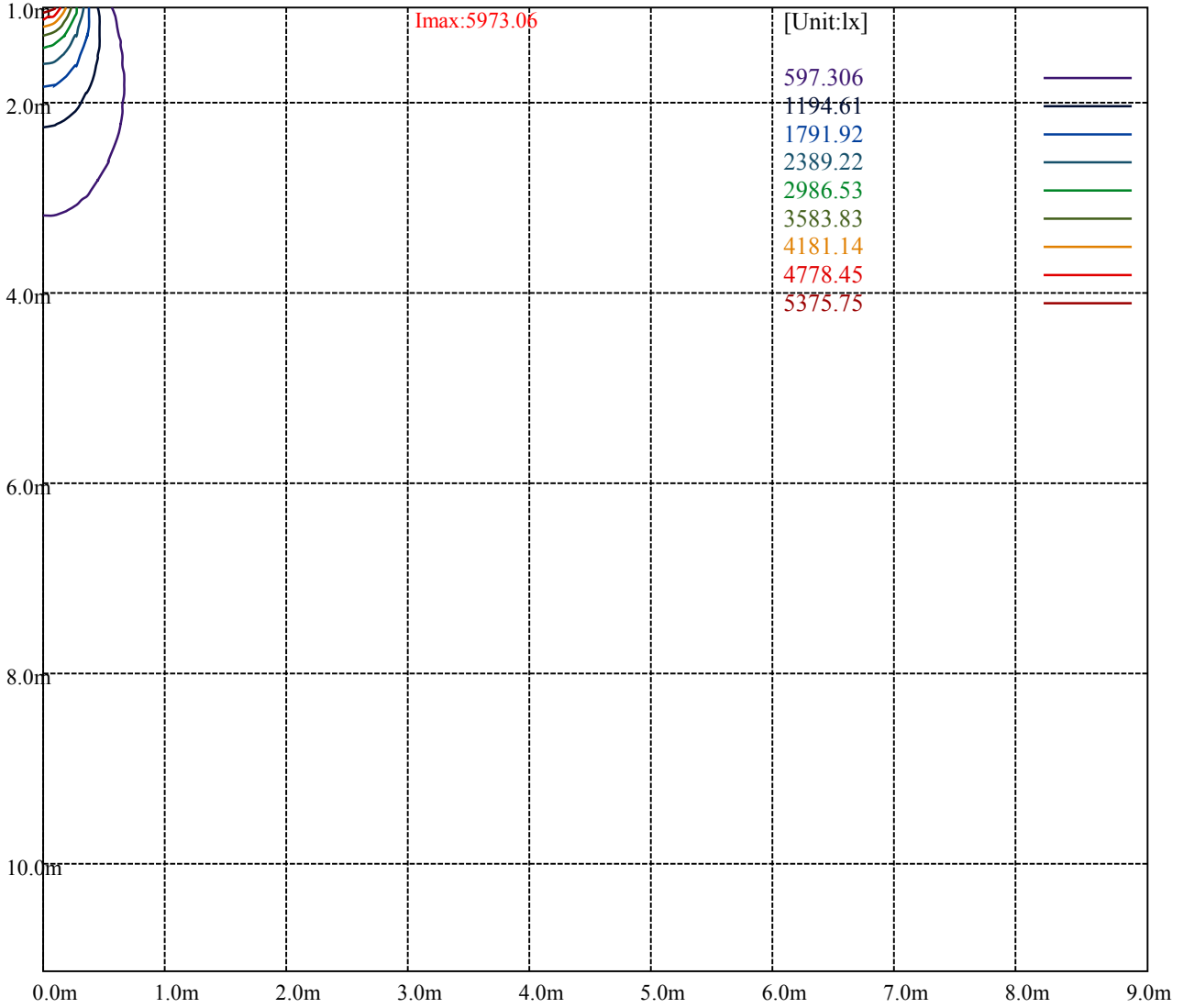
House

[Unit:cd]

Road

Imax:5973.06

(10%Imax) 597.306	—
(20%Imax) 1194.61	—
(30%Imax) 1791.92	—
(40%Imax) 2389.22	—
(50%Imax) 2986.53	—
(60%Imax) 3583.83	—
(70%Imax) 4181.14	—
(80%Imax) 4778.45	—
(90%Imax) 5375.75	—



Luminance Table

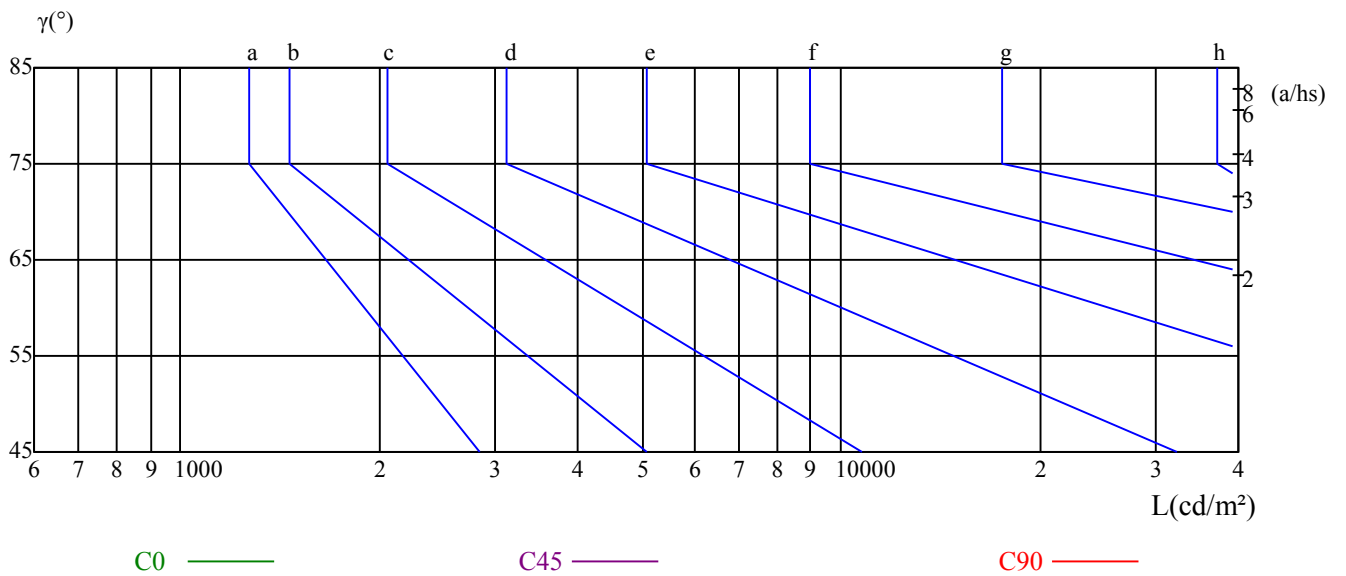
γ	45	50	55	60	65	70	75	80	85
C0	0	0	0	0	0	0	0	0	0
C45	0	0	0	0	0	0	0	0	0
C90	0	0	0	0	0	0	0	0	0

L(Hor)(65)	L(Ver)(65)	L45(65)	L(Hor)(75)	L(Ver)(75)	L45(75)	L(Hor)(85)	L(Ver)(85)	L45(85)
0	0	0	0	0	0	0	0	0

Glare Table

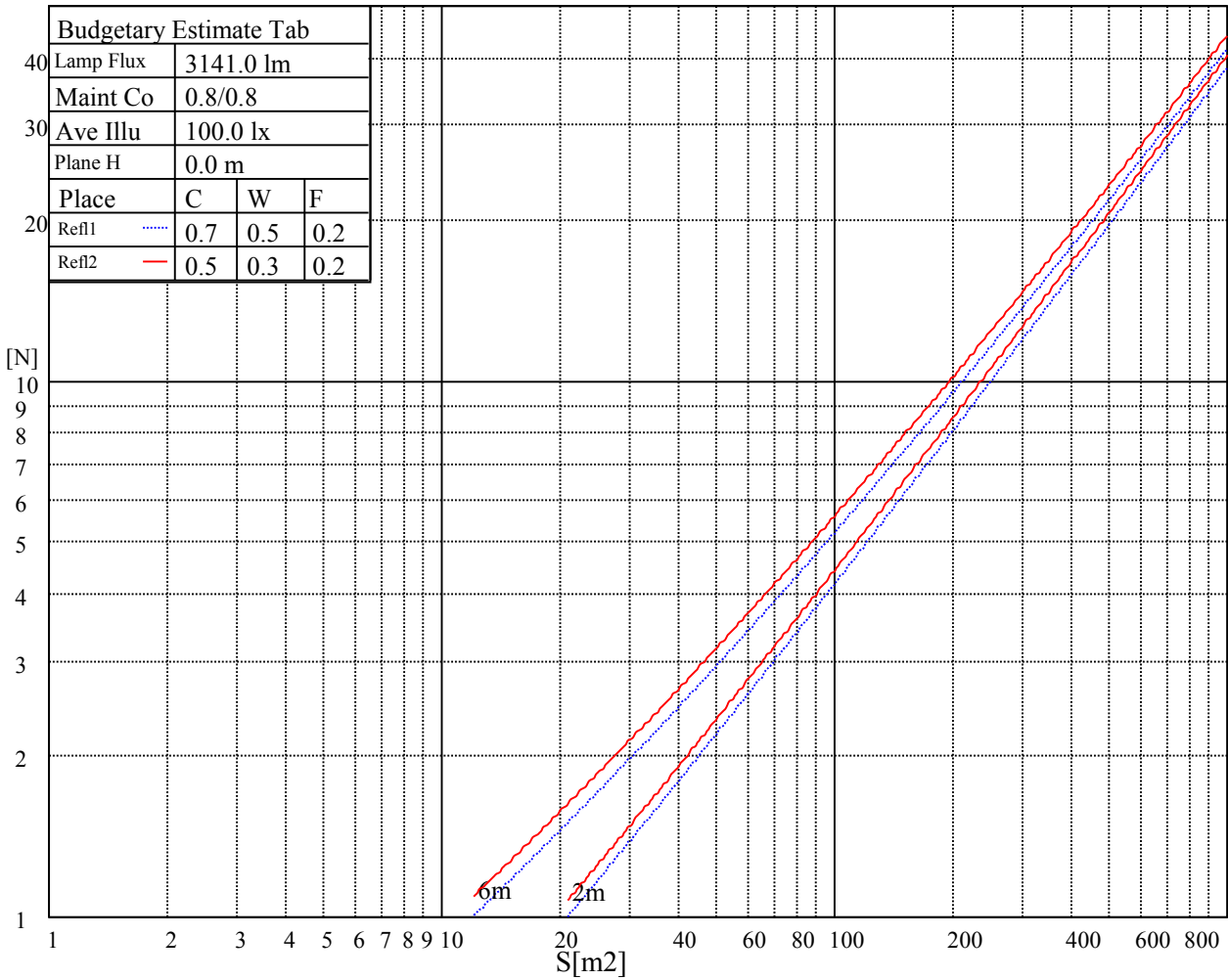
Glare	Quality	Service Values Illuminance(lx)							
1.15	A	2000	1000	500	<=300				
1.5	B		2000	1000	500	<=300			
1.85	C			2000	1000	500	<=300		
2.2	D				2000	1000	500	<=300	
2.55	E					2000	1000	500	<=300
		a	b	c	d	e	f	g	h

Luminance Limiting Curve

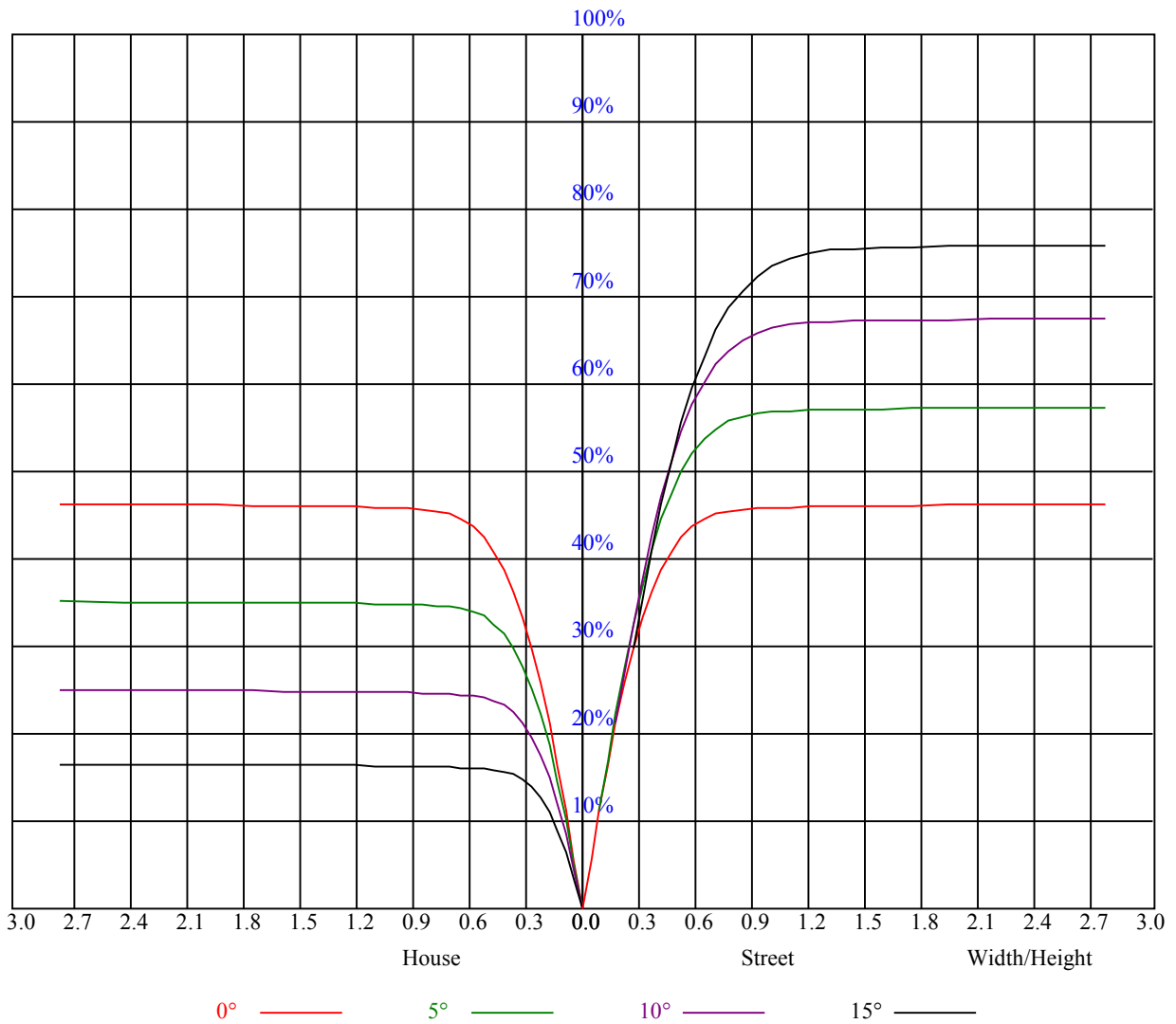


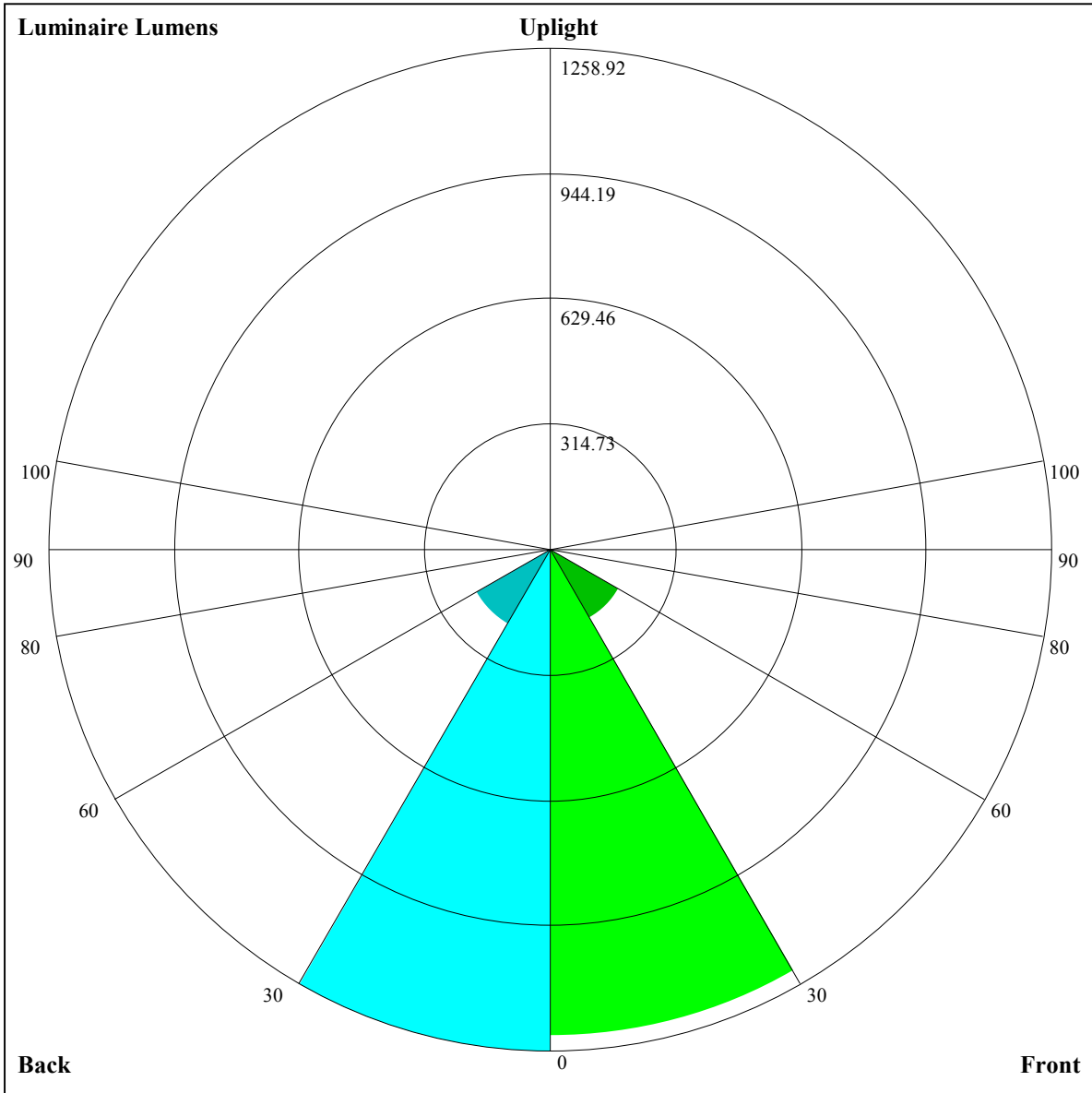
Illumination assessment according UGR											
Rf of Ceiling	70	70	50	50	30	70	70	50	50	30	
Rf of Wall	50	30	50	30	30	50	30	50	30	30	
Rf of Floor	20	20	20	20	20	20	20	20	20	20	
Room dimensions		Viewed crosswise					Viewed endwise				
X	Y										
2H	2H	非数字	非数字	非数字	非数字	非数字	非数字	非数字	非数字	非数字	
	3H	非数字	非数字	非数字	非数字	非数字	非数字	非数字	非数字	非数字	
	4H	非数字	非数字	非数字	非数字	非数字	非数字	非数字	非数字	非数字	
	6H	非数字	非数字	非数字	非数字	非数字	非数字	非数字	非数字	非数字	
	8H	非数字	非数字	非数字	非数字	非数字	非数字	非数字	非数字	非数字	
	12H	非数字	非数字	非数字	非数字	非数字	非数字	非数字	非数字	非数字	
4H	2H	非数字	非数字	非数字	非数字	非数字	非数字	非数字	非数字	非数字	
	3H	非数字	非数字	非数字	非数字	非数字	非数字	非数字	非数字	非数字	
	4H	非数字	非数字	非数字	非数字	非数字	非数字	非数字	非数字	非数字	
	6H	非数字	非数字	非数字	非数字	非数字	非数字	非数字	非数字	非数字	
	8H	非数字	非数字	非数字	非数字	非数字	非数字	非数字	非数字	非数字	
	12H	非数字	非数字	非数字	非数字	非数字	非数字	非数字	非数字	非数字	
8H	4H	非数字	非数字	非数字	非数字	非数字	非数字	非数字	非数字	非数字	
	6H	非数字	非数字	非数字	非数字	非数字	非数字	非数字	非数字	非数字	
	8H	非数字	非数字	非数字	非数字	非数字	非数字	非数字	非数字	非数字	
	12H	非数字	非数字	非数字	非数字	非数字	非数字	非数字	非数字	非数字	
12H	4H	非数字	非数字	非数字	非数字	非数字	非数字	非数字	非数字	非数字	
	6H	非数字	非数字	非数字	非数字	非数字	非数字	非数字	非数字	非数字	
	8H	非数字	非数字	非数字	非数字	非数字	非数字	非数字	非数字	非数字	
Variation with the observer position at spacings:											
S = 1.0H	非数字/非数字					非数字/非数字					
S = 1.5H	非数字/非数字					非数字/非数字					
S = 2.0H	非数字/非数字					非数字/非数字					
Standard tables:	BK0					BK0					
Uncorrected UGR	负无穷大					负无穷大					

UGR calculation is based on CIE Publ. 117 ,S/H = 0.25



RHOCC	80			70			50			30			10			0
RHOW	50	30	10	50	30	10	50	30	10	50	30	10	50	30	10	0
RCR	COEFFICIENTS OF UTILIZATION RHOFC=20 CU															
0	1.10	1.10	1.10	1.08	1.08	1.08	1.03	1.03	1.03	0.99	0.99	0.99	0.95	0.95	0.95	0.93
1	1.03	1.01	0.99	1.01	1.00	0.98	0.98	0.96	0.95	0.94	0.93	0.92	0.91	0.90	0.89	0.88
2	0.97	0.94	0.91	0.96	0.93	0.90	0.93	0.90	0.88	0.90	0.88	0.86	0.88	0.86	0.85	0.83
3	0.92	0.88	0.84	0.91	0.87	0.84	0.88	0.85	0.82	0.86	0.83	0.81	0.84	0.82	0.80	0.79
4	0.87	0.82	0.79	0.86	0.82	0.78	0.84	0.80	0.78	0.82	0.79	0.77	0.80	0.78	0.76	0.75
5	0.82	0.78	0.74	0.82	0.77	0.74	0.80	0.76	0.73	0.78	0.75	0.73	0.77	0.74	0.72	0.71
6	0.78	0.73	0.70	0.78	0.73	0.70	0.76	0.72	0.69	0.75	0.72	0.69	0.74	0.71	0.68	0.67
7	0.75	0.70	0.66	0.74	0.69	0.66	0.73	0.69	0.66	0.72	0.68	0.66	0.71	0.68	0.65	0.64
8	0.71	0.66	0.63	0.71	0.66	0.63	0.70	0.66	0.63	0.69	0.65	0.62	0.68	0.65	0.62	0.61
9	0.68	0.63	0.60	0.68	0.63	0.60	0.67	0.63	0.60	0.66	0.62	0.60	0.65	0.62	0.59	0.58
10	0.65	0.60	0.57	0.65	0.60	0.57	0.64	0.60	0.57	0.63	0.60	0.57	0.63	0.59	0.57	0.56





Luminaire Lumens:

FL=1219.65,FM=199.15,FH=8.71,FVH=1.37

BL=1258.92,BM=217.11,BH=9.28,BVH=1.49

UL=0,UH=0

BUG Rating:B3-U0-G0

Intensity data(cd)

C/γ(°)	0.0	1.0	2.0	3.0	4.0	5.0	6.0	7.0	8.0
0.0	5971.94	5941.88	5882.27	5810.94	5719.01	5593.65	5455.46	5286.63	5112.28
45.0	5976.41	5959.17	5929.05	5861.09	5786.97	5738.51	5614.25	5463.82	5284.42
90.0	5966.37	5928.52	5844.37	5763.58	5663.29	5524.58	5349.08	5170.21	4963.48
135.0	5977.51	5973.62	5949.13	5880.59	5817.62	5710.65	5594.23	5443.79	5264.34
180.0	5971.94	5976.99	5969.16	5950.81	5897.30	5846.58	5739.09	5614.83	5534.04
225.0	5976.41	5968.05	5949.65	5911.81	5838.22	5750.23	5656.04	5526.79	5356.85
270.0	5966.37	5971.94	5979.77	5970.31	5926.84	5863.29	5768.05	5692.83	5573.57
315.0	5977.51	5978.67	5959.69	5908.45	5831.02	5740.19	5634.86	5492.78	5333.46
360.0	5971.94	5941.88	5882.27	5810.94	5719.01	5593.65	5455.46	5286.63	5112.28
C/γ(°)	9.0	10.0	11.0	12.0	13.0	14.0	15.0	16.0	17.0
0.0	4920.06	4703.87	4508.29	4296.56	4087.63	3963.37	3736.62	3427.97	3298.14
45.0	5095.57	4901.09	4686.05	4477.12	4261.45	4046.42	3839.17	3621.87	3399.53
90.0	4767.94	4548.39	4342.24	4137.77	3924.37	3710.44	3571.73	3273.07	3052.99
135.0	5153.49	4882.69	4661.51	4543.98	4327.79	4119.38	3918.80	3704.29	3490.36
180.0	5349.60	5154.59	4960.69	4757.90	4561.22	4352.28	4126.10	3916.01	3705.97
225.0	5172.41	4977.41	4768.47	4566.79	4357.33	4141.14	3929.41	3721.00	3553.33
270.0	5403.64	5254.88	5077.17	4874.33	4690.47	4485.47	4262.61	4051.41	3840.79
315.0	5140.67	5033.70	4826.45	4631.44	4422.50	4208.00	3985.66	3774.51	3558.90
360.0	4920.06	4703.87	4508.29	4296.56	4087.63	3963.37	3736.62	3427.97	3298.14
C/γ(°)	18.0	19.0	20.0	21.0	22.0	23.0	24.0	25.0	26.0
0.0	3075.27	2871.33	2651.83	2437.32	2240.11	2066.23	1910.23	1767.62	1638.37
45.0	3180.56	2958.27	2734.30	2510.86	2300.82	2122.53	1960.37	1823.87	1740.29
90.0	2938.77	2734.83	2533.72	2345.39	2161.53	2002.74	1853.41	1711.91	1573.14
135.0	3278.64	3073.59	2866.34	2675.80	2484.68	2296.93	2137.56	1983.81	1837.80
180.0	3500.40	3293.67	3086.42	2859.66	2659.61	2463.50	2284.10	2115.27	1964.84
225.0	3320.43	3106.50	2887.52	2679.11	2476.90	2284.68	2100.82	1939.24	1782.66
270.0	3632.44	3417.35	3201.21	2977.19	2767.15	2554.33	2361.53	2180.45	2087.99
315.0	3340.50	3124.84	2919.27	2703.66	2493.62	2295.25	2119.16	1962.05	1823.34
360.0	3075.27	2871.33	2651.83	2437.32	2240.11	2066.23	1910.23	1767.62	1638.37
C/γ(°)	27.0	28.0	29.0	30.0	31.0	32.0	33.0	34.0	35.0
0.0	1492.35	1265.60	1070.70	1009.09	869.80	785.76	601.58	526.36	410.04
45.0	1605.47	1392.64	1299.61	1143.60	999.84	865.02	734.09	607.04	489.46
90.0	1413.83	1096.35	1096.35	942.76	808.04	696.72	565.41	422.44	336.72
135.0	1702.97	1545.28	1382.08	1208.78	1078.95	894.56	776.98	633.80	482.26
180.0	1820.55	1677.37	1558.11	1398.79	1241.11	1088.41	935.19	792.59	652.20
225.0	1632.22	1486.78	1265.07	1098.66	1039.69	952.38	757.85	677.06	548.86
270.0	1885.15	1749.23	1670.12	1462.29	1366.47	1204.31	1048.31	899.55	756.90
315.0	1684.05	1545.86	1413.25	1053.51	1053.51	963.89	827.07	688.88	556.74
360.0	1492.35	1265.60	1070.70	1009.09	869.80	785.76	601.58	526.36	410.04
C/γ(°)	36.0	37.0	38.0	39.0	40.0	41.0	42.0	43.0	44.0
0.0	303.34	212.51	139.40	96.08	78.48	66.49	57.08	50.99	45.41
45.0	378.03	297.82	297.82	120.16	94.19	85.41	68.07	60.39	56.14
90.0	244.47	170.88	120.21	98.13	84.47	72.54	64.60	57.77	51.51
135.0	388.65	286.10	286.10	131.35	100.29	85.62	73.59	64.39	57.56
180.0	523.47	408.67	304.49	304.49	144.07	103.23	84.84	72.59	66.18
225.0	431.38	327.15	240.79	172.14	117.16	88.04	74.11	63.92	54.88
270.0	625.97	498.98	385.86	321.79	321.79	122.47	88.73	77.27	63.50
315.0	436.79	327.10	230.85	154.38	101.60	81.73	70.22	60.03	53.61
360.0	303.34	212.51	139.40	96.08	78.48	66.49	57.08	50.99	45.41

Intensity data(cd)

C/γ(°)	45.0	46.0	47.0	48.0	49.0	50.0	51.0	52.0	53.0
0.0	40.42	35.74	31.85	28.44	25.70	24.28	21.50	19.92	19.03
45.0	50.09	44.52	39.26	35.43	31.75	28.65	25.97	23.71	21.81
90.0	45.73	40.89	36.79	33.38	30.22	27.70	25.39	23.39	21.76
135.0	53.93	46.41	41.63	39.11	34.22	32.48	29.70	27.28	25.23
180.0	55.45	51.56	45.78	38.95	36.27	32.43	29.22	26.44	24.18
225.0	48.52	42.84	37.95	33.53	29.70	27.02	23.76	21.45	19.92
270.0	54.93	49.99	44.10	39.00	34.53	30.49	27.17	24.34	21.87
315.0	47.99	44.73	38.11	34.11	32.06	29.28	26.86	24.65	22.92
360.0	40.42	35.74	31.85	28.44	25.70	24.28	21.50	19.92	19.03
C/γ(°)	54.0	55.0	56.0	57.0	58.0	59.0	60.0	61.0	62.0
0.0	17.14	16.45	15.35	14.40	13.82	13.19	12.56	12.04	11.51
45.0	20.08	18.55	17.29	16.14	15.14	14.30	13.67	13.14	12.72
90.0	20.92	19.03	18.24	17.08	16.03	15.09	14.40	13.56	12.72
135.0	23.55	22.29	20.97	19.76	18.55	17.50	16.61	15.72	14.98
180.0	22.23	20.55	18.98	17.71	16.61	15.51	14.61	14.03	13.51
225.0	18.03	16.71	15.77	14.72	13.82	13.14	12.67	12.56	12.19
270.0	19.71	17.87	16.56	15.77	14.93	14.14	13.67	13.46	13.14
315.0	21.34	20.13	19.03	18.03	17.14	16.24	15.45	14.93	14.24
360.0	17.14	16.45	15.35	14.40	13.82	13.19	12.56	12.04	11.51
C/γ(°)	63.0	64.0	65.0	66.0	67.0	68.0	69.0	70.0	71.0
0.0	11.09	10.51	9.83	9.36	8.78	8.30	7.78	7.41	7.04
45.0	11.83	11.09	10.67	10.14	9.51	8.88	8.36	7.83	7.41
90.0	12.04	11.20	10.46	9.67	8.99	8.41	7.78	7.31	6.89
135.0	14.35	13.56	12.72	11.93	11.09	10.35	9.67	8.94	8.36
180.0	12.98	12.40	11.98	11.30	10.67	10.20	9.57	9.15	8.62
225.0	12.09	11.93	11.83	11.46	11.41	10.83	9.93	9.62	9.25
270.0	12.67	12.40	12.09	11.77	11.67	11.20	10.51	10.20	9.67
315.0	13.56	13.04	12.30	11.51	10.99	10.04	9.30	8.62	7.94
360.0	11.09	10.51	9.83	9.36	8.78	8.30	7.78	7.41	7.04
C/γ(°)	72.0	73.0	74.0	75.0	76.0	77.0	78.0	79.0	80.0
0.0	6.57	6.15	5.83	5.52	5.05	4.73	4.36	4.05	3.68
45.0	6.89	6.52	6.04	5.73	5.31	4.84	4.57	4.15	3.78
90.0	6.52	5.99	5.83	5.41	4.89	4.63	4.21	3.78	3.36
135.0	7.99	7.62	7.10	6.68	6.36	5.89	5.41	4.99	4.68
180.0	8.09	7.73	7.31	6.62	6.04	5.68	5.20	4.84	4.36
225.0	8.04	7.10	6.47	6.10	5.52	5.20	4.89	4.36	4.26
270.0	9.25	8.78	8.30	7.73	7.10	6.41	5.62	5.15	4.78
315.0	7.57	7.25	6.83	6.36	5.94	5.57	5.15	4.73	4.26
360.0	6.57	6.15	5.83	5.52	5.05	4.73	4.36	4.05	3.68
C/γ(°)	81.0	82.0	83.0	84.0	85.0	86.0	87.0	88.0	89.0
0.0	3.26	3.00	2.79	2.42	2.16	2.05	1.79	1.47	1.31
45.0	3.31	3.05	2.68	2.31	2.16	1.94	1.73	1.47	1.31
90.0	2.94	2.73	2.52	2.21	2.05	1.89	1.73	1.52	1.52
135.0	4.15	3.78	3.47	3.10	2.84	2.52	2.26	2.05	1.68
180.0	4.05	3.78	3.31	3.00	2.73	2.47	2.21	1.94	1.79
225.0	3.84	3.42	3.15	2.94	2.68	2.37	2.10	1.89	1.73
270.0	4.36	3.99	3.42	3.15	2.84	2.47	2.31	2.05	1.89
315.0	3.94	3.68	3.21	2.94	2.68	2.37	2.16	1.89	1.73
360.0	3.26	3.00	2.79	2.42	2.16	2.05	1.79	1.47	1.31

Intensity data(cd)

C/γ(°)	90.0
0.0	1.26
45.0	1.31
90.0	1.58
135.0	1.73
180.0	1.68
225.0	1.58
270.0	1.73
315.0	1.68
360.0	1.26